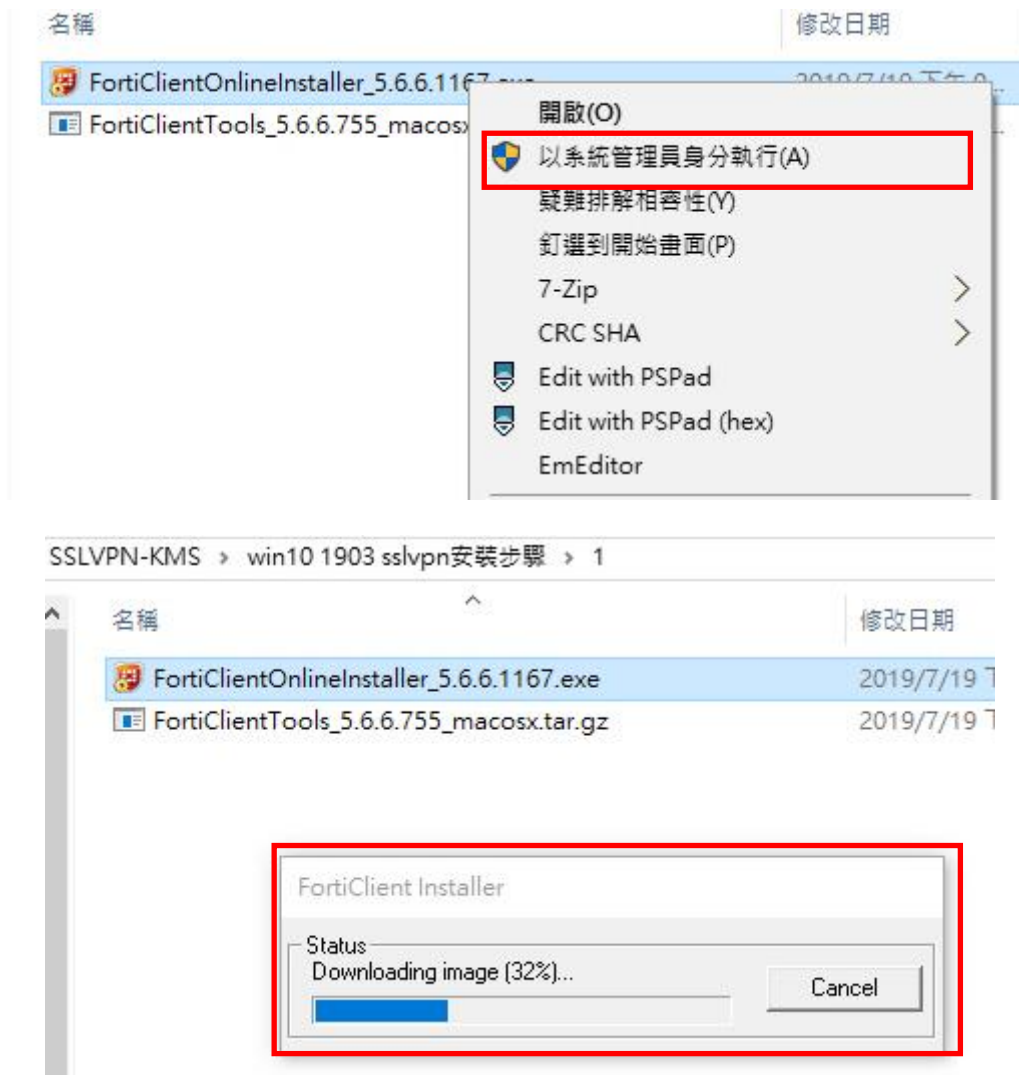
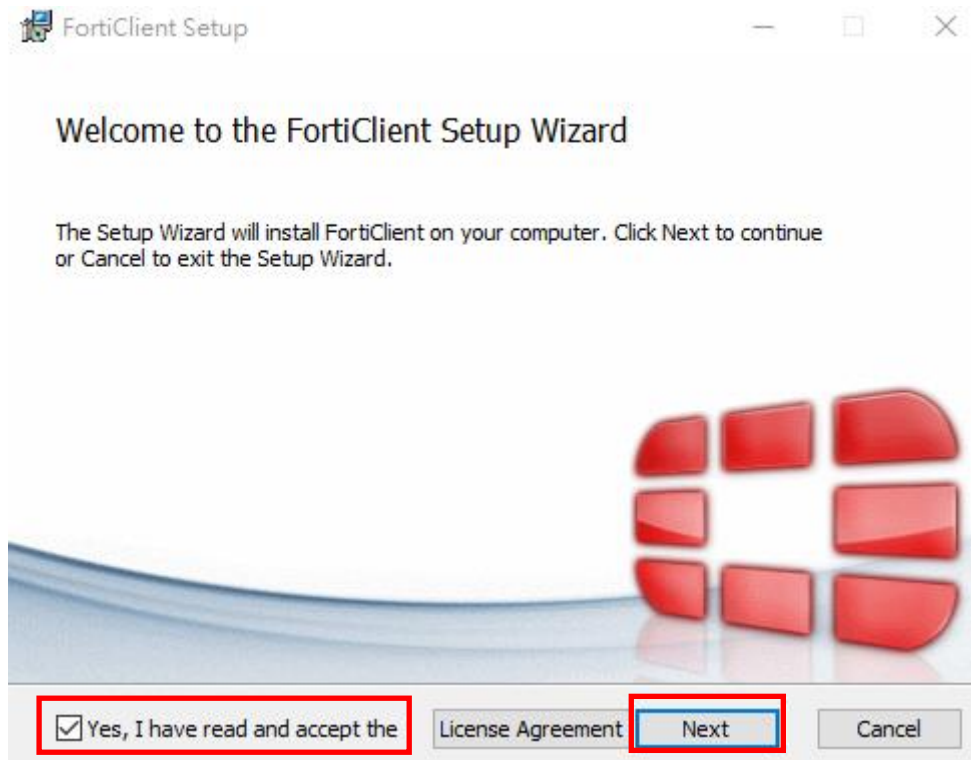


FortiClient SSLVPN 程式安裝篇

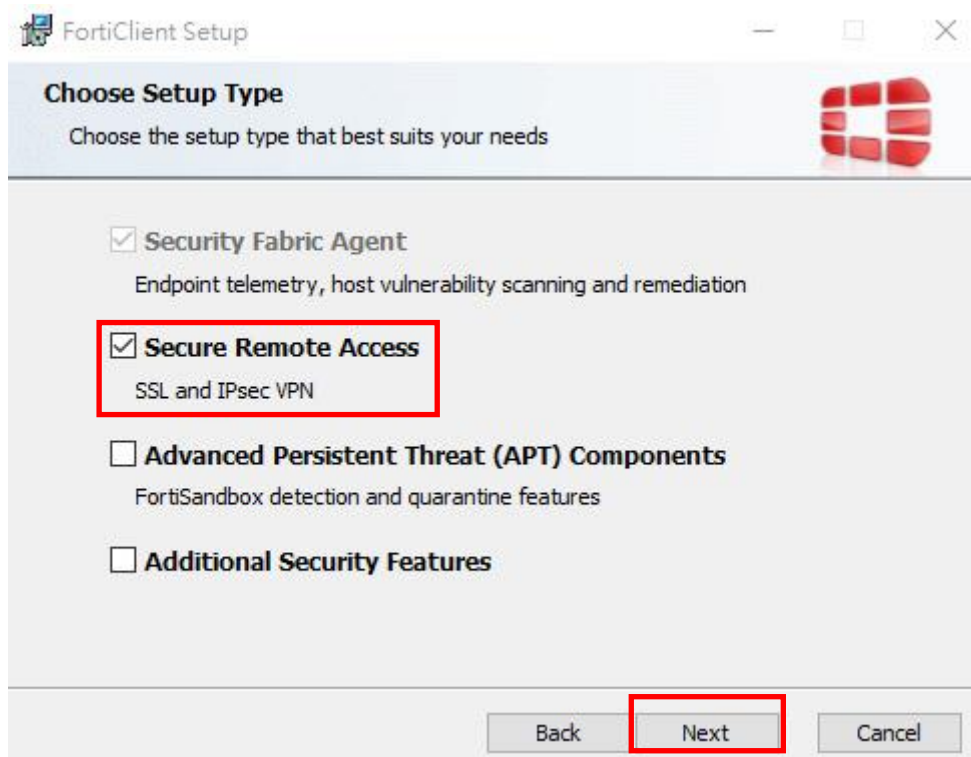
- 1、點選本機端 FortiClientOnlineInstaller_5.6.6.1167.exe 按滑鼠右鍵，選擇「以系統管理員身分執行(A)」進行安裝



- 2、勾選畫面左下端「Yes, I have read and accept」，點選 Next 按鈕進入下一步驟

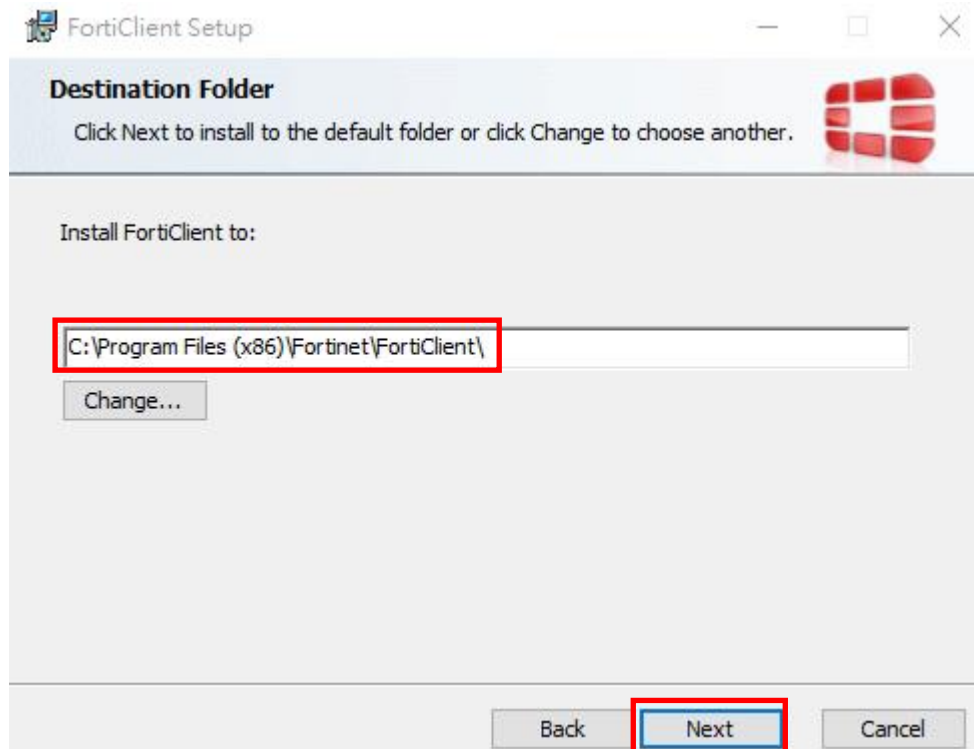


3、勾選 Secure Remote Access · 點選 Next 按鈕進入下一步驟

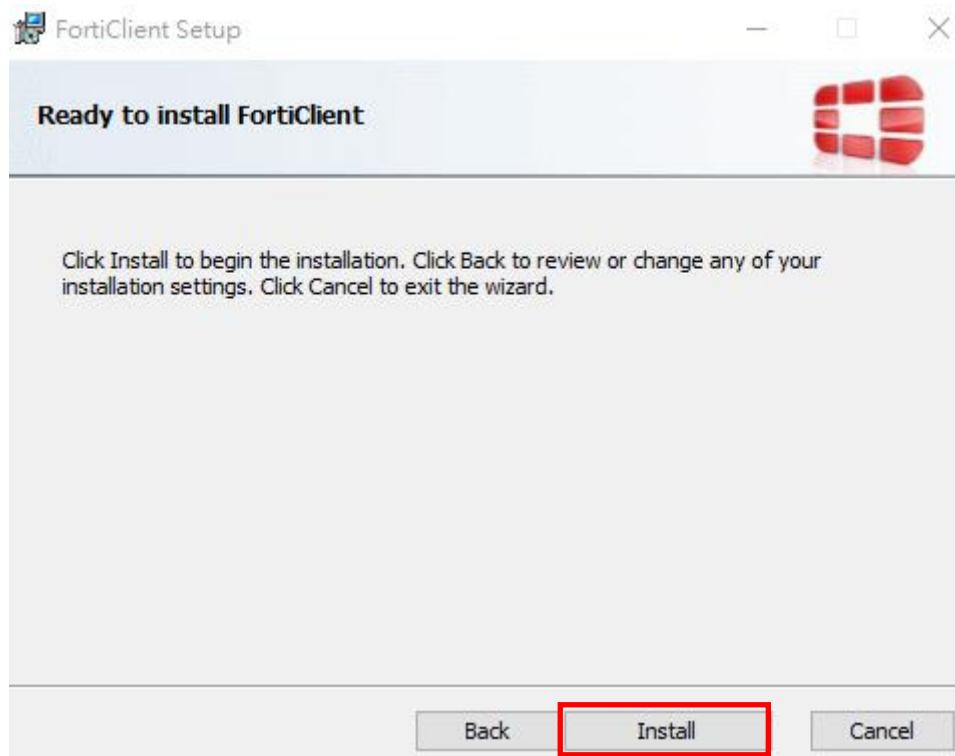


4、SSLVPN 程式安裝的路徑，如欲變更可選擇 change... 按鈕變更，點選 Next

按鈕進入下一步驟

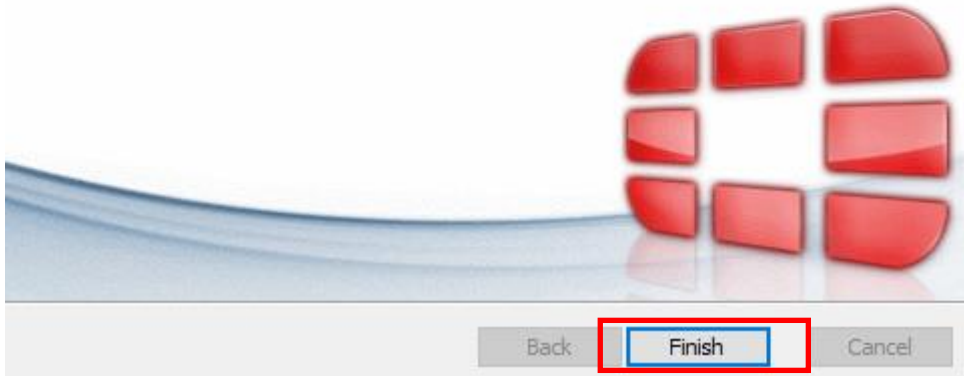


5、點選 Install 按鈕進行安裝



Completed the FortiClient Setup Wizard

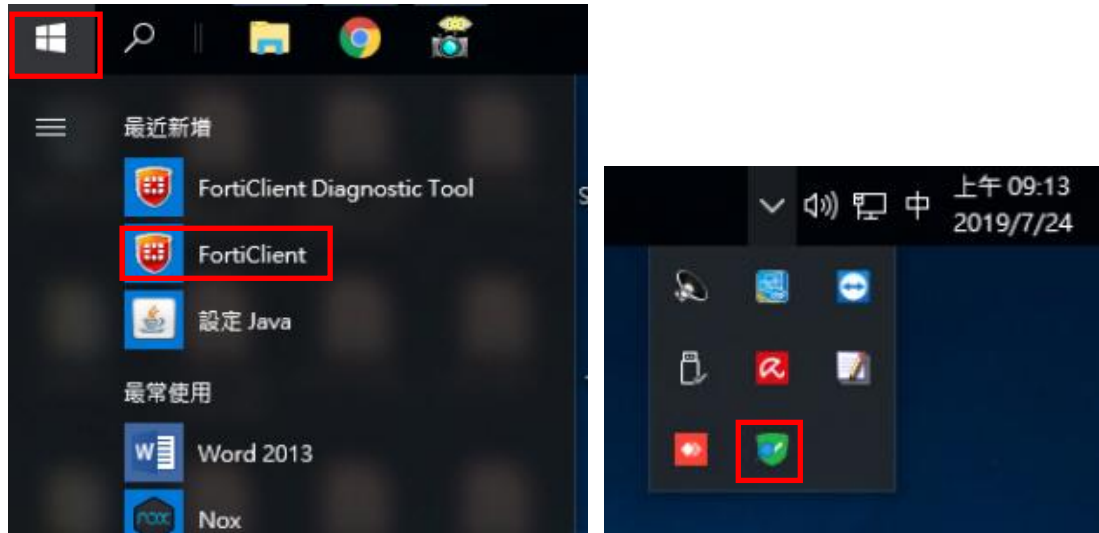
Click the Finish button to exit the Setup Wizard.



FortiClient SSLVPN 程式設定篇

1、可點選作業系統視窗圖示進入找到 FortiClient，或展開顯示隱藏的圖示點選

FortiClient 常駐系統的圖檔，開啟程式



2、選擇視窗左列「遠程訪問」選項後，再點選「配置 VPN」



3、「連接名」輸入易於識別的名稱，例如 PTC-KMS；「遠程網關」請必須輸入

163.24.239.238，再點選「配置 VPN」，再依序點選應用與關閉按鈕

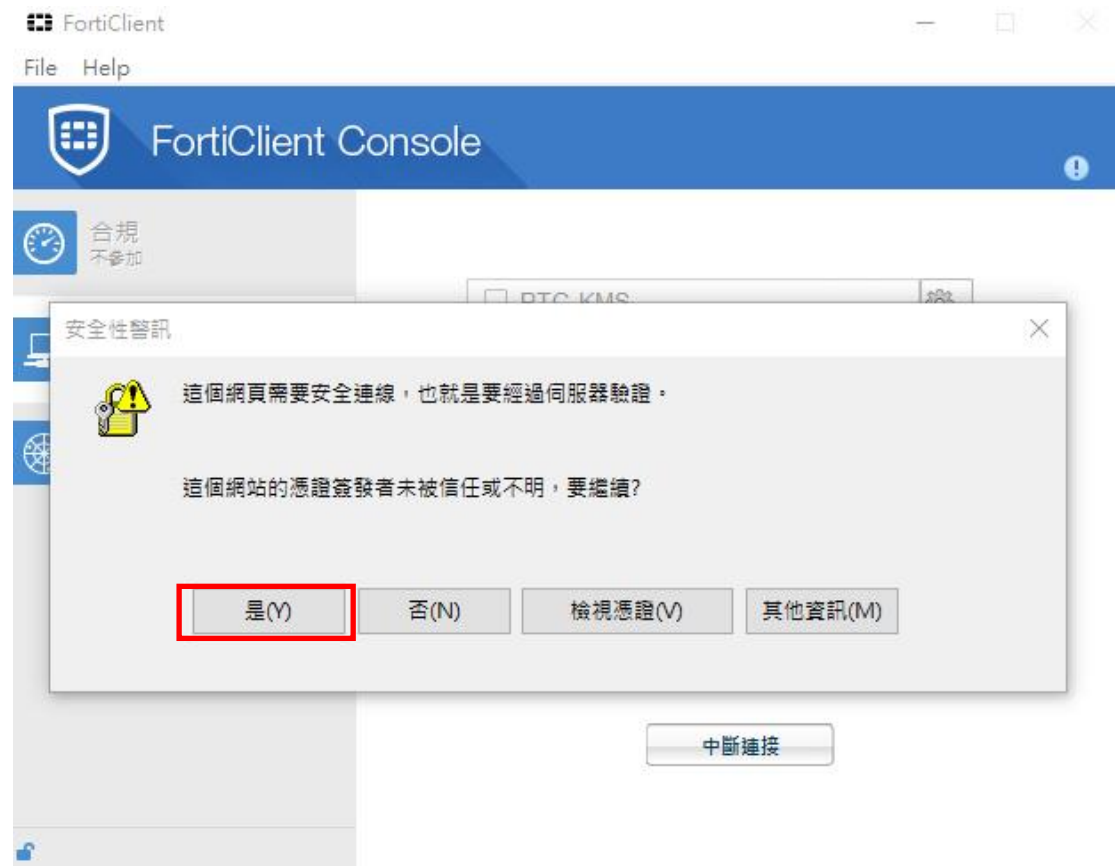
The screenshot shows the 'FortiClient' application window with the 'New VPN Connection' dialog box open. The dialog has a title bar '新 VPN 連接' and two tabs: 'SSL-VPN' (selected) and 'IPsec VPN'. The 'Connection Name' field is highlighted with a red box and contains the text 'PTC-KMS'. Below it is a 'Description' field. The 'Remote Gateway' field is also highlighted with a red box and contains the IP address '163.24.239.238'. To the right of this field is a checkbox for 'Custom Port' and a text box containing '443'. The 'Authentication' section has three options: 'Prompt at login' (selected with a radio button), 'Save login name' (unselected), 'Client certificate' (checkbox), and 'Do not prompt for invalid server certificate' (checkbox). At the bottom of the dialog, the 'Apply' and 'Close' buttons are highlighted with red boxes.

4、「帳號欄位」請輸入各校名稱縮寫，例如信義國小就輸入 syps；「密碼欄位」

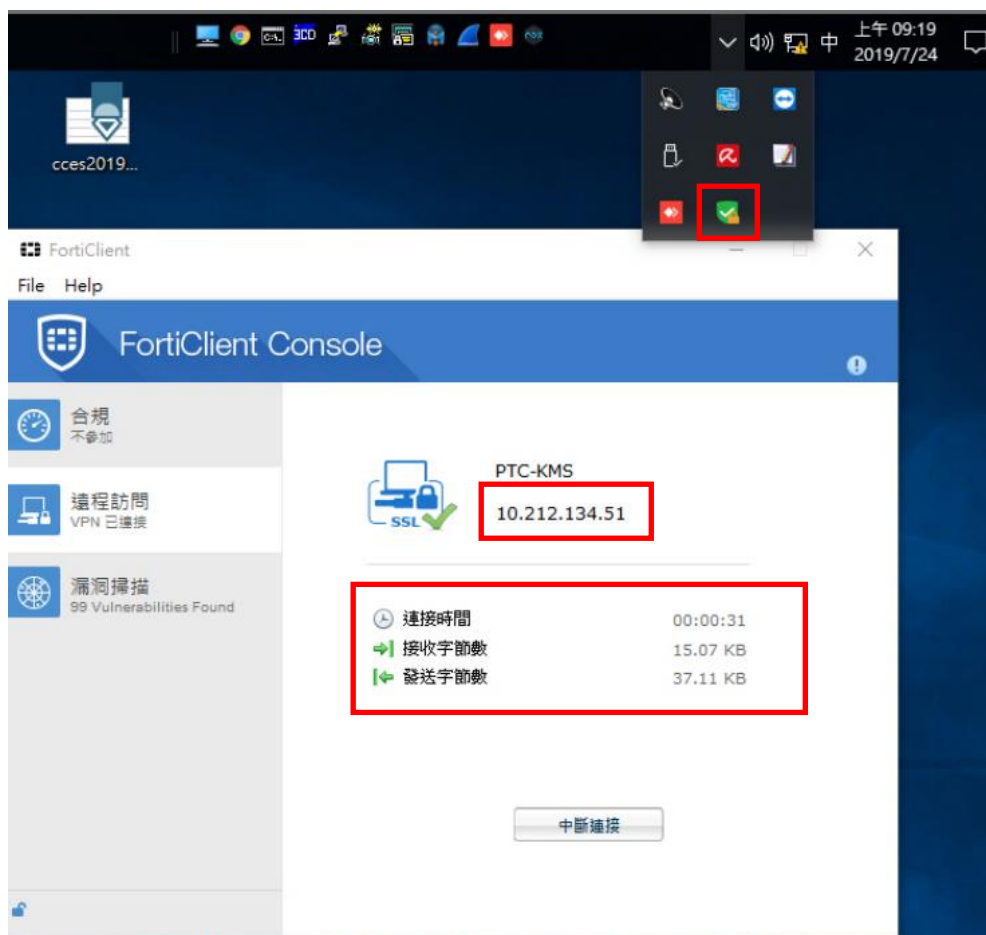
請輸入自己學校對應的密碼，完成後即可點選[連接](#)按鈕



4、點選連接按鈕後會秀出下列畫面，點選「是(Y)」按鈕



5、如果 SSLVPN 連線成功，可點選展開顯示隱藏的圖示，點選 FortiClient 常駐系統的圖檔，將顯示本機端取得的 IP 與傳送接收封包的相關資訊



6、此時已在屏東縣學術網路網段，可單獨執行 ptc_kms.bat 進行授權即可；

完成授權後記得要中斷 SSLVPN 連線程式，恢復正常的網路模式

```
C:\Windows\System32\cmd.exe
-----
PTC KMS Activation Menu
* 1. Windows 10、8.1、8、7
* 2. Offices 2016
* 3. Offices 2013
* 4. Offices 2010
* 5. Exit
-----
請選擇:
```